

LIVE THE
SANTA BARBARA LIFESTYLE

Willow Creek
TOWNHOMES



Welcome to Willow Creek...

a private enclave of charming Craftsman-style townhomes in the heart of Old Town Goleta.

Willow Creek's prime location, classic architecture and lush setting add even more value to the sought-after Santa Barbara lifestyle.



Willow Creek

TOWNHOMES

THE SANTA BARBARA

PLAN C
 1,413 Square Feet
 3 Bedrooms, 2 Baths
 Plus Powder Room

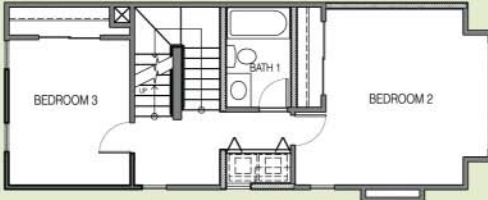


THE SANTA ROSA

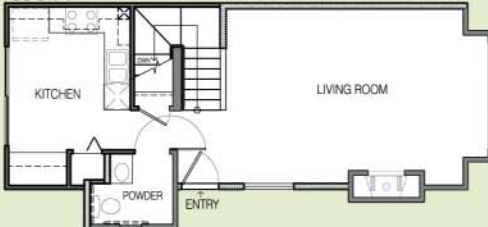
FLOOR 3



FLOOR 2



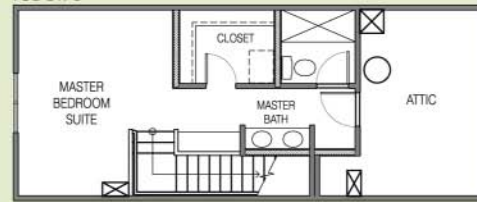
FLOOR 1



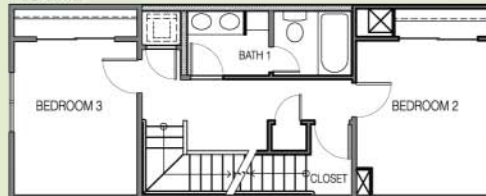
PLAN A3
 1,386 Square Feet
 3 Bedrooms, 2 Baths
 Plus Powder Room

THE SANTA CRUZ

FLOOR 3



FLOOR 2



FLOOR 1



PLAN A
 1,386 Square Feet
 3 Bedrooms, 2 Baths
 Plus Powder Room

SITE PLAN



Willow Creek
TOWNHOMES

Willow Creek

TOWNHOMES

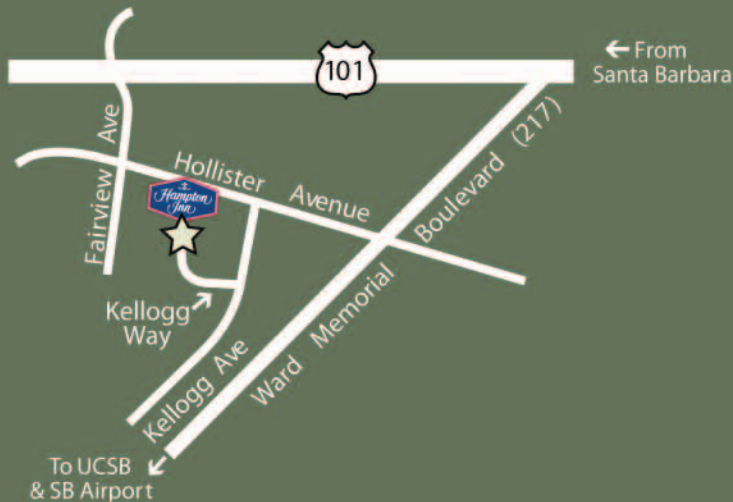
345 Kellogg Way
Goleta, California 93117

p 805.284.6699

f 805.683.3045

info@willowcreekgoleta.com

WWW.WILLOWCREEKGOLETA.COM



The developer reserves the right to change, without notice, the square footage, hardscape, landscape, design, price, density, and location of any home or home-site within the project area. All maps, renderings, floor plans, features and other materials are approximate and subject to change without notice. Obtain a Public Report issued by the California Department of Real Estate.

